



BULLY DOG

#1 IN PERFORMANCE



'08 DODGE 6.7L CUMMINS				
SETTING	HP	TORQUE	HP DIFF	TORQUE DIFF
Stock	313	583	-	-
Tow	345	637	+32	+54
Performance	391	718	+78	+135
Extreme	441	775	+128	+192

PMT '07.5-'08 DODGE 6.7L CUMMINS VERSION 1.0.1.5 INSTALLATION

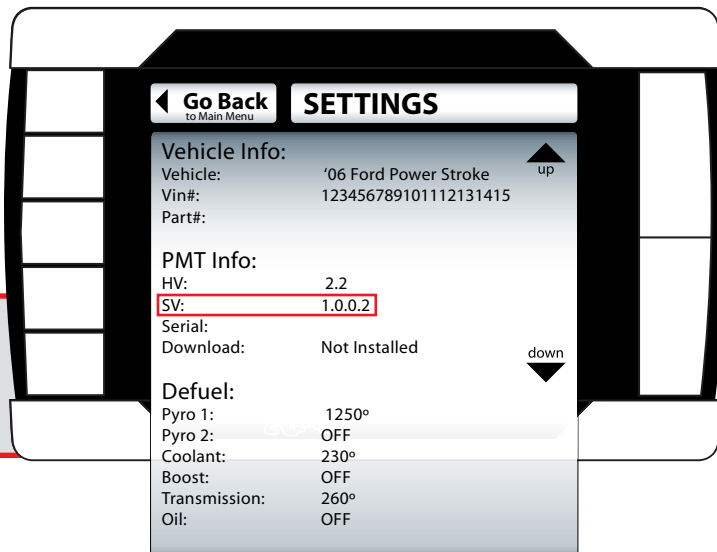
This is a temporary document that describes the steps needed to install the Dodge 6.7L Cummins file onto the PMT. This document will be consolidated into the complete PMT installation manual as soon as development is complete for the GM 6.6L Duramax LMM and 6.4L Ford Powerstroke applications are also complete.

The installation topics covered in this document include:

- **PMT Fixed Dash Mount**
- **Parts Installation**
- **Uploading the 6.7L files from the Update Agent to the SD card**
- **Uploading the 6.7L Files from the SD card to the PMT**
- **Verify 6.7L File Upload**
- **Install Download**
- **Download Features**
- **Special Functions**
- **Monitoring Features**
- **Pyrometer Location and Overview**
- **Defueling Features**

Checking the PMT Version number: To find the version number to the PMT enter the main menu and scroll down to the "Show Settings" menu option. See the diagram to the right, and notice the version number is labeled "SV" within the Show Settings menu.

If the current version on the PMT is 1.0.0.9 or lower return the vehicle to stock before updating the SD Card. If the current version on the PMT is 1.0.1.0 or higher the vehicle does not need to be returned to stock before updating the SD Card.



PMT VERSION UPDATE

PMT Custom Pillar Pod:

The Custom Pillar Pod for the 6.7L Cummins is an option that is sold separately (See product data sheet for pricing info). The Custom Pillar Pod positions the PMT into a location within the driver's reach and view, and it will not obstruct the view of the road.

For instructions on attaching the PMT cradle to the Custom Pillar Pod, refer to the PMT instruction set.

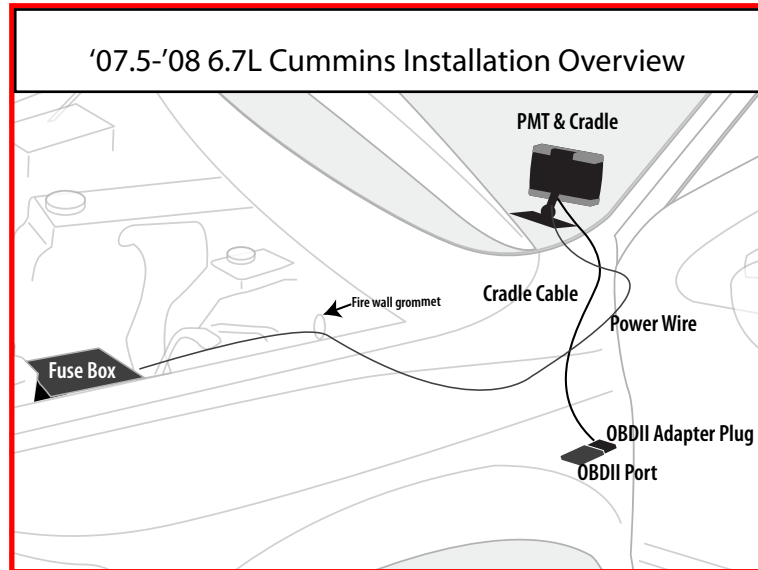
Custom Pillar Pod Part Number: 32303



Parts Installation:

Refer to the PMT Installation Manual to identify the parts described below. The installation overview provides a quick reference installation guide for the 6.7L Cummins. See the install overview below. There are three general steps that need to take place to install the PMT on the 6.7L Cummins:

1. The first step in installing the PMT and all of the parts is determining the mounting position for the PMT. There are two mounting positions offered for the PMT: Add on Dash Mount and Universal dash mount. See the PMT mounting section in the PMT instruction Manual to reference installing the Dash Mount.



'07.5-'08 6.7L Cummins OBD II diagram



2. The second step includes running the Cradle Cable from the PMT mounting position down to the OBD II block, and plugging it into the OBD II block. See the OBD II diagram below to see the location of the OBD II port and how the Cradle Cable plugs into the OBD II block. For in-depth instructions refer to the PMT installation manual.

3. Run the Power Wire through the fire wall, from inside the cab, and into the engine bay. This can be done without drilling holes by accessing one of the existing holes used to run OEM wiring harnesses. Once in the engine bay locate the fuse box which can be found near the drivers side headlight. Open the fuse box and locate fuse number 28. Using the fuse jack and spade connector, connect the power wire to fuse number 28.

Connect power to Fuse 28

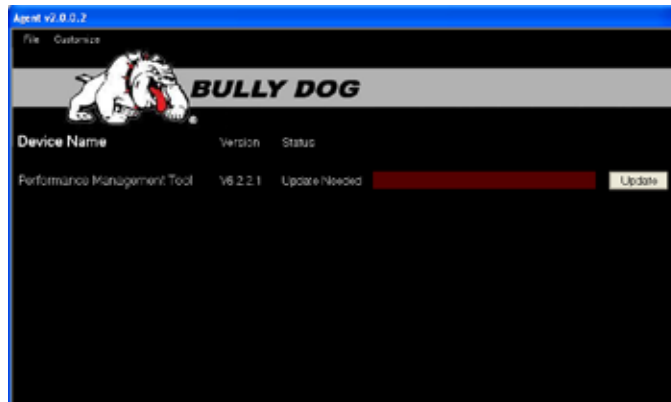


Uploading the Dodge 6.7L files from the Update Agent to the SD card: Since the PMT does not come with the 6.7L files, the files must be extracted from the Update Agent. Before extracting the files, verify that the PMT is in stock mode.

1. Remove the SD Card, located on the side of the PMT, and plug it into a PC that has a high speed internet and is loaded with the Update Agent 2.0. Use the SD card reader included with the PMT. For information on the Update Agent visit www.bullydog.com, or read the PMT instruction manual.

2. Once the SD card is plugged into the PC, the Update Agent will automatically recognize the SD card and open to the following screen on your computer.

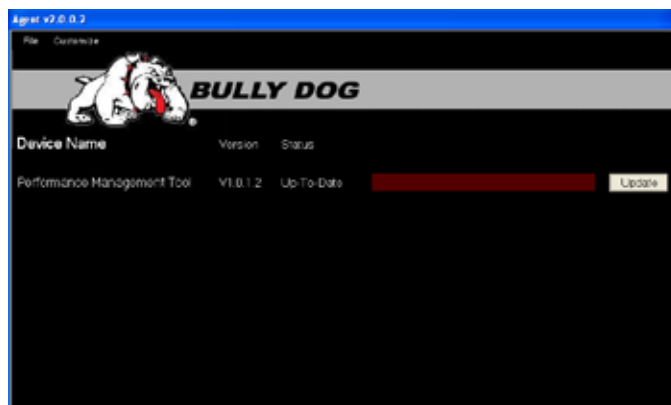
i. Press Update on the Update agent screen to begin the update process for the PMT SD card.



ii. The Update Agent will then simply transfer the latest PMT files onto the SD card. Do not unplug the SD card during this process.



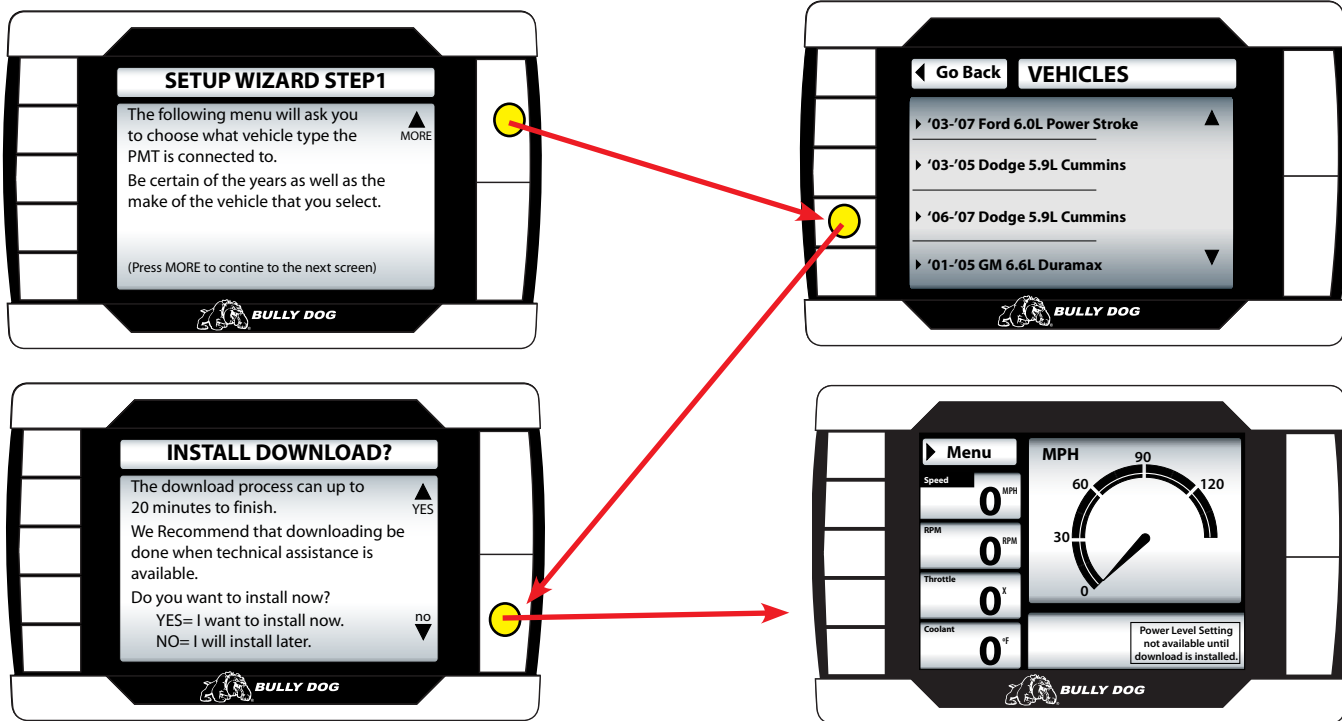
iii. After the file transfer to the SD card is complete, simply unplug the SD card from the computer and take the SD card to the PMT.



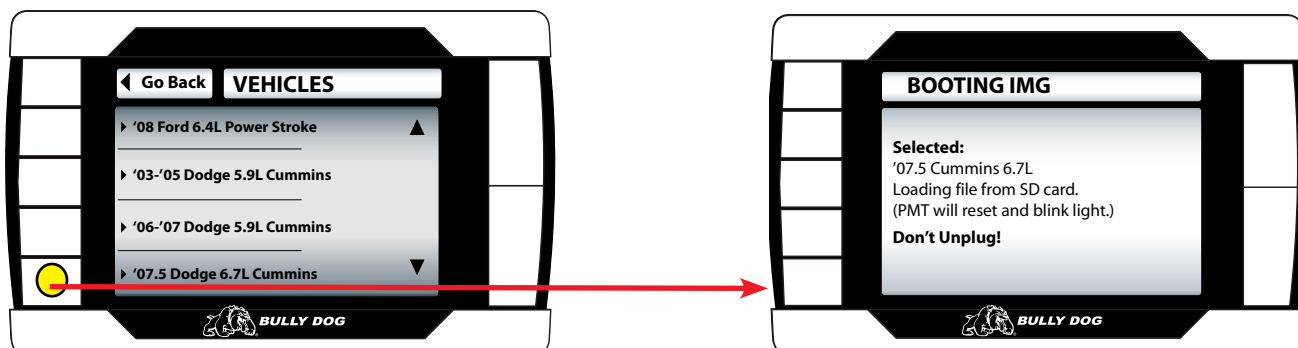
Uploading the 6.7L Cummins Files from the SD card to the PMT: This section is broken into two categories. Installation on the 6.7L Cummins for new PMTs and for used PMTs.

NEW PMT: Uploading SD card Files to PMT

1. With the PMT secure in the PMT cradle, insert the SD card into the side of the PMT.
2. Turn the vehicle key to the run position. (Do not start the engine)
3. If the PMT is new then it will activate the Installation Wizard. The Installation Wizard will require the user to select a vehicle type. When the vehicle selection screen appears, notice that the 6.7L Cummins is not yet in the list. The 6.7L Cummins is not yet in the list because at this point the PMT does not know that it exists. Select '06-'07 Dodge 5.9L Cummins to boot load the new files onto the PMT.

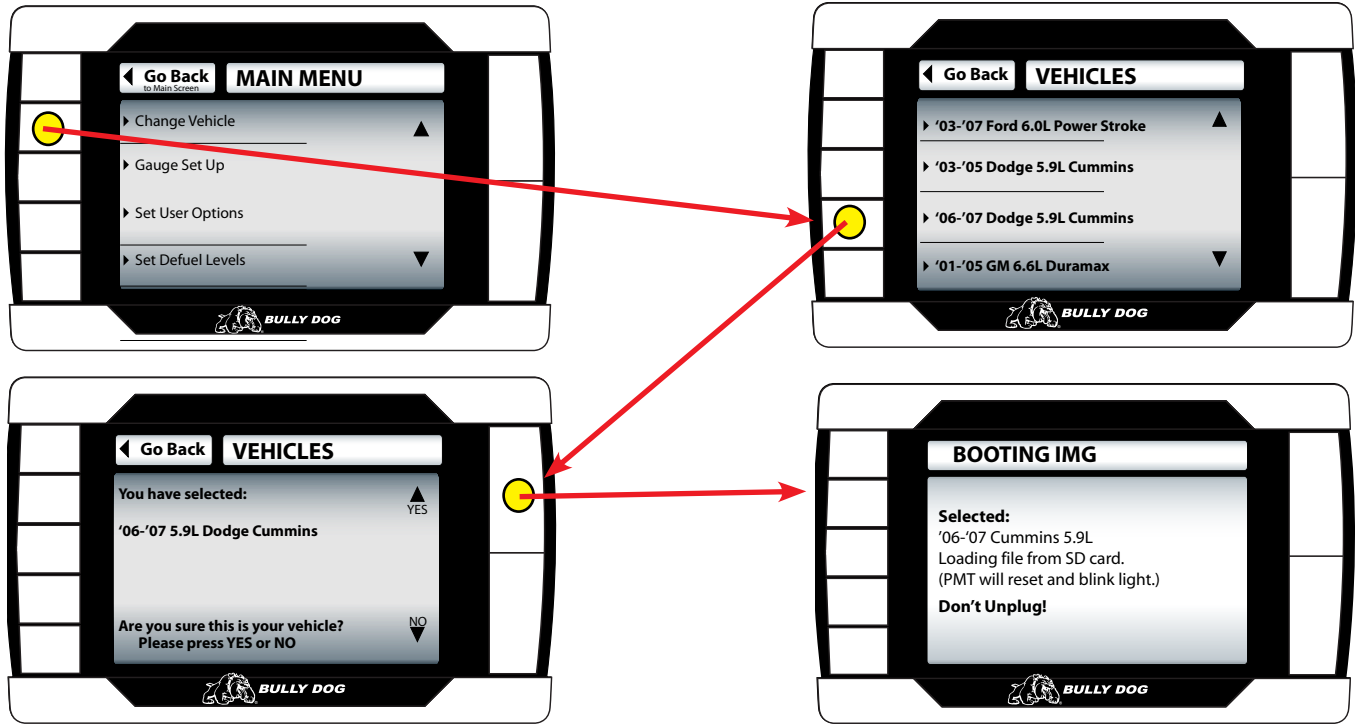


4. Next in the Installation Wizard is the download portion. For this installation the user should select no to the install download portion of the Installation Wizard. When the option to install the download at a later time is chosen the PMT will go straight to the main screen.
5. From the Main Screen, Navigate to the Main menu and select the Change Vehicle menu option.
6. Once in the Change Vehicle menu, scroll to the bottom of the menu and select '07.5 Dodge 6.7L Cummins. Verify the selection and then the PMT will boot load the files from the SD card and into the PMT.

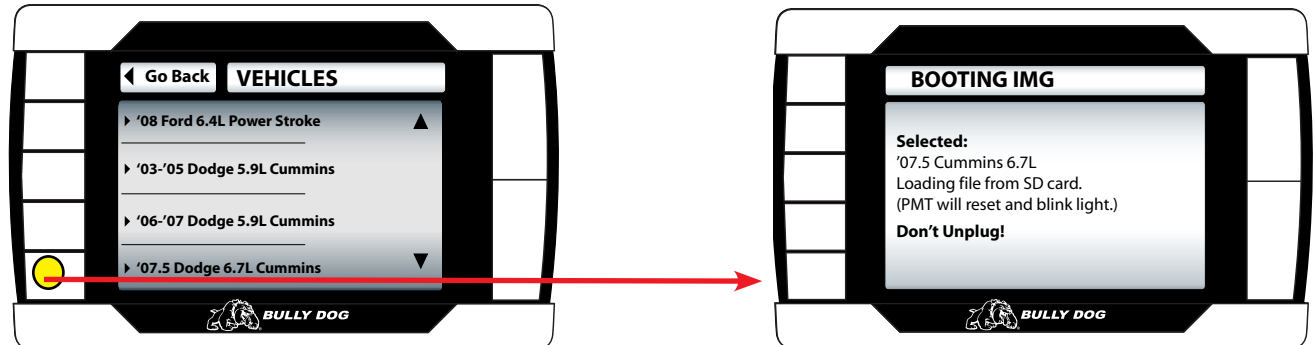


USED PMT: Transferring SD card Files to PMT: Make certain that the PMT was returned to stock before transferring it to the new vehicle.

1. With the PMT secure in the PMT cradle, insert the SD card into the side of the PMT.
2. Turn the vehicle key to the run position. (Do not start the engine)
3. From the Main Screen navigate to the main menu and scroll up to the "Change Vehicle," main menu option. Enter into the Change Vehicle menu; notice that the 6.7L Cummins is not yet in the list. The 6.7L is not yet in the list because at this point the PMT does not know that it exists. Select '06-'07 Dodge 5.9L Cummins to boot load the new files onto the PMT. Once this vehicle type is selected the PMT will require verification. Select "Yes" to verify the selection.

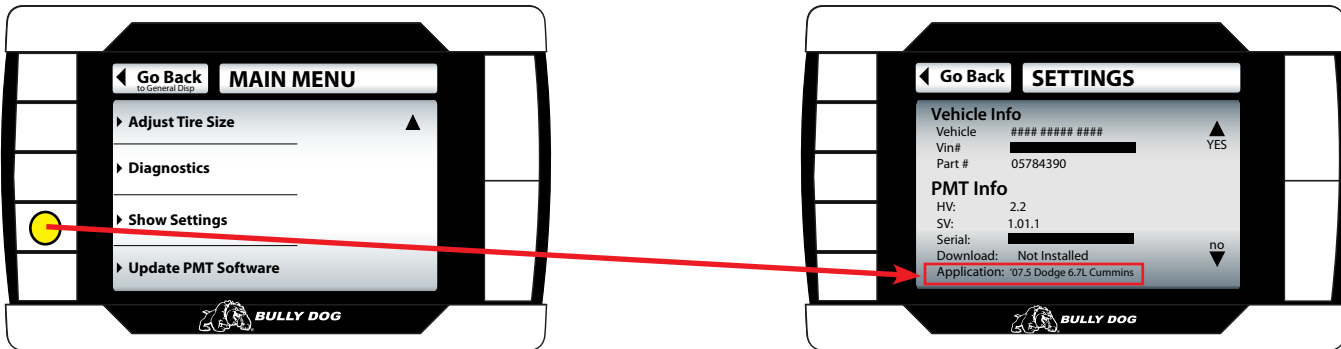


4. The PMT will boot load the new vehicle files from the SD card, this is noticeable by the blinking lights. The PMT will then reset.
5. Now enter into the Change vehicle screen one more time. Upon entering the Change Vehicle screen again, on the second time the menu will also include the 6.7L Cummins. Select '07.5 Dodge 6.7L Cummins. Verify the selection and wait for the PMT to load the vehicle files from the SD card.



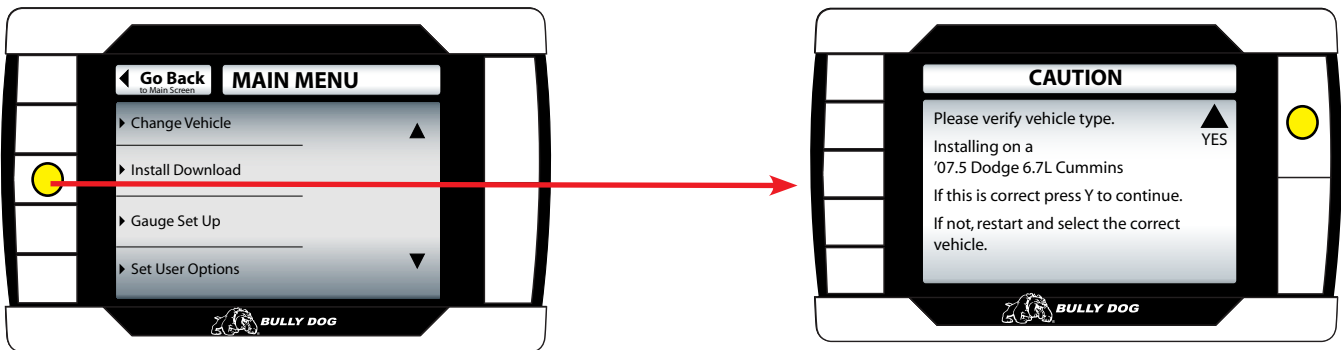
Verify that the 6.7L files are loaded on the PMT: This is a step to ensure that the correct vehicle is loaded before attempting to download the Bully Dog tuning into the vehicle.

1. Navigate from the Main Screen into the Main Menu.
2. Scroll down through the main menu and select the "Show Settings" menu item.
3. Once in the Show Settings menu, look at the bottom of the screen. Notice that the Vehicle Application that the PMT is currently loaded for is listed. For this application verify that it says: '07.5 Dodge 6.7L Cummins.



Installing the Download on the 6.7L Cummins: Installing the download on the 6.7L is no different than the other vehicle applications once the correct vehicle files have been loaded to the PMT. For in depth instructions on installing the download see the PMT Manual.

1. Navigate from the Main Screen into the Main Menu; then select install download.
2. Again verify the vehicle type. If an incorrect vehicle is selected the download will fail, but should not in any way harm the vehicle.
3. Follow the Screen prompts given on the PMT screen, read below for a description of the two download features available for the 6.4L.

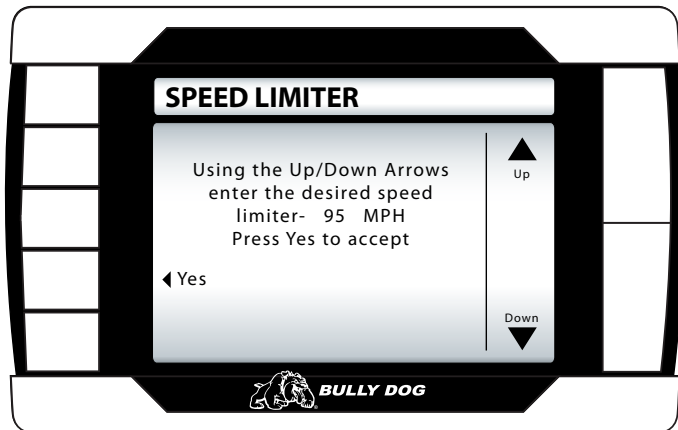
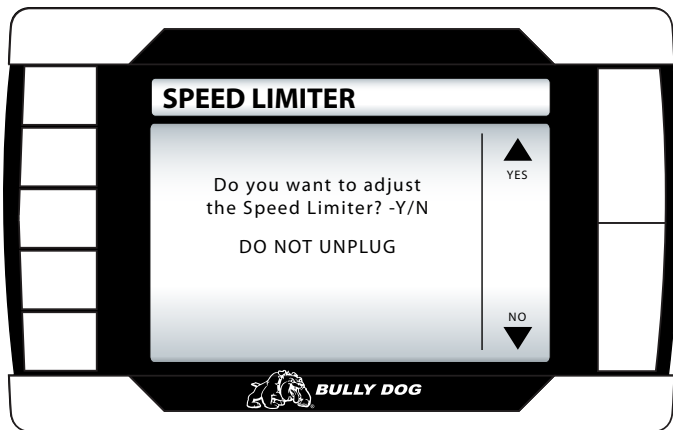


Download Features Available: During the download to the vehicle, the PMT will display two download features:

- Speed Limiter
- Calibrate Speedometer

Speed Limiter

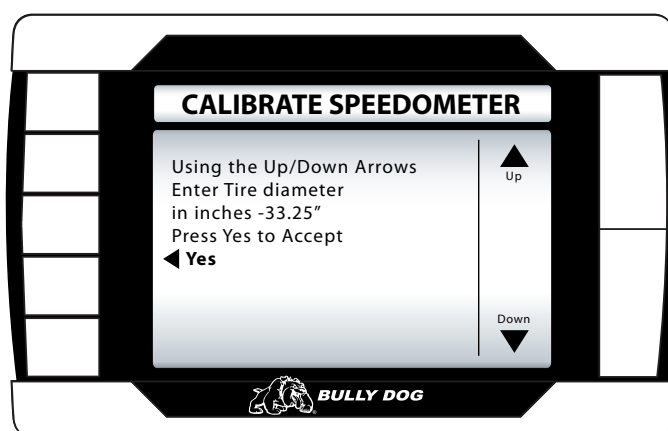
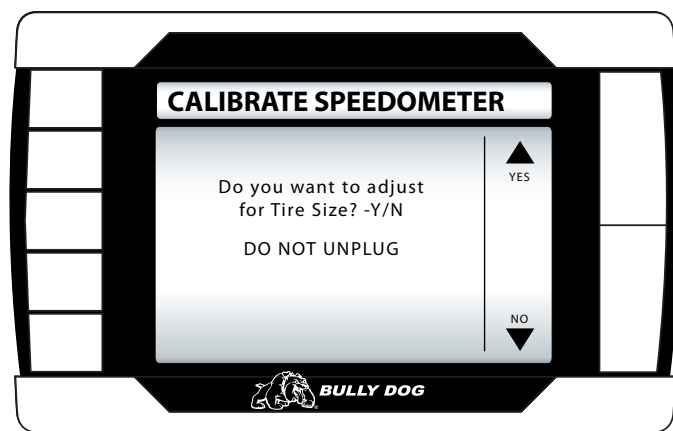
This allows the vehicle to reach speeds in excess of where the OEM speed limiter was set. By selecting yes to increase the speed limiter you agree that your vehicle has tires rated for speeds in excess of 140 mph. Use the up and down arrows to set the speed limiters to the desired mph in 5 mph increments from 50 mph to 200 mph.



Calibrate Speedometer

Adding a different sized tire than the stock OEM tire size will cause the speedometer to read incorrectly. The PMT can calibrate the OEM speedometer to read correctly for any tire size from 23" up to 45". Tire size can be adjusted in increments of .25".

Note: Calibrating above a 35" tire can cause an ABS warning light to appear on the dash.



Special Functions

This feature is available for use after a download to the vehicle is complete. Find the Special Functions tuning feature by navigating into the main menu. The transmission tune is a feature unique to Ford vehicles.

See the diagram below for user instructions.

Auto Door Lock

Enabling this feature will cause all doors to lock once the vehicle reaches a speed of 15 mph. Once the vehicle comes to a complete stop, if the driver's door is the first to open all of the other doors will automatically unlock.

Head Lamp Delay

Use this feature to set the amount of time that the head lamps remain on after the vehicle has been turned off. Use the up/down arrows on the downloader to scroll in 5 second increments between 0 and 80 seconds.

Fog Lamp

Enabling this feature will allow the fog lights and high beams to operate at the same time. This feature is for Off-road use only.

Horn Chirp on Lock

Enabling this feature will sound a horn chirp each time the doors are locked when using a remote door lock system.

Optical Chirp on Lock

Enabling this feature will flash the hazard lights each time the doors are locked when using a remote door lock.

Seat Belt Minder Chime

Enabling this feature will remind the driver to buckle their seat belt with an audio chime each time the vehicle is put into drive and the driver's seat belt is not buckled.

Accessory Delay

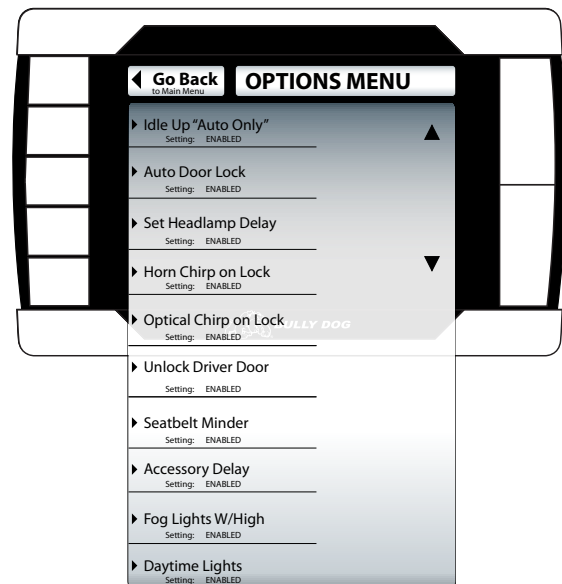
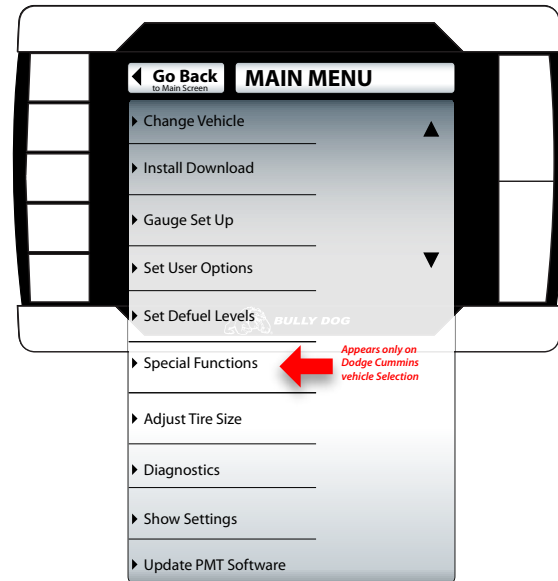
Use this feature to set the amount of time that the accessory items in the vehicle will remain on after the vehicle has been shut off as long as the doors remain closed. Accessory items include the radio, cigarette lighter, etc. Use the up/down scroll buttons on the downloader to choose between the following settings: 0 seconds, 45 seconds, 5 minutes, 10 minutes, 30 minutes, or 60 minutes.

Unlock Driver Door

Enabling this feature will affect the way the doors unlock when using a remote door lock. If enabled, the first time the remote unlock button is pressed only the driver door will unlock, the second hit will unlock the passenger doors. If disabled, all doors will unlock on the first press of the remote unlock button.

Daytime Headlights:

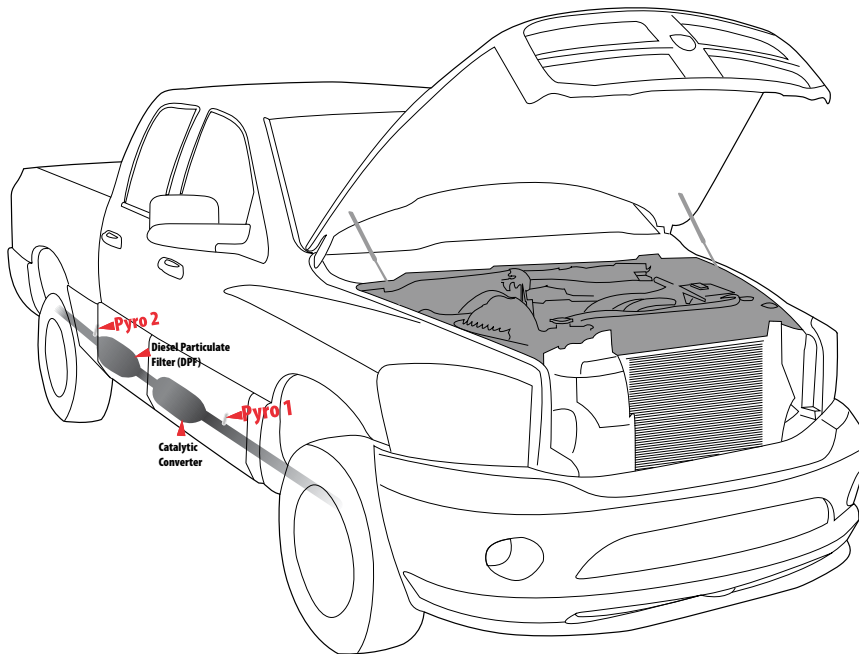
Use this new option to turn daytime running lights on or off while driving.



Monitoring Features Available: The Vehicle Parameters below can be set up through the Gauge Setup Menu.

GAUGE FEATURES	FORD '03-'07	FORD '08	GM '07.5-'08	GM '06-'07	GM '01-'05	DODGE '06-'07	DODGE '03-'05	DODGE '07.5-'08
Pyro 1	X	X	X (pre-DPF)	X	X	X	X	X
Pyro 2	X	X	X (post-DPF)	X	X	X	X	X
Boost Pressure	X	X	X	X	X	X	X	X
Speed	X	X	X	X	X	X	X	X
RPM	X	X	X	X	X	X	X	X
Coolant	X	X	X	X	X	X	X	X
IPW (injection pulse width)	X	X						
Throttle Position	X	X		X	X	X	X	X
Intake Temperature	X	X	X		X		X	X
Barometer		X	X				X	
Battery Voltage	X	X			X			
Oil Temperature	X	X						
ICP (injection control pressure)	X	X	X	X	X	X	X	X
Transmission Temperature	X	X	X	X		X		X
Load		X	X			X	X	

Pyrometer Location and Overview: The diagram below shows where Pyro 1 and Pyro 2 are installed on the 6.7L Cummins. There is no installation required for these pyrometers; each pyrometer is OEM. The temperatures at each location are displayed on the PMT as a vehicle parameter under the gauge setup menu. Each pyrometer is identified within that menu as Pyro1 and Pyro 2. See the Pyro Calibration Procedure in the PMT Instruction Manual for details on determining safe pyrometer defuel levels.



Defuel Features Available: The Defuel safety parameters can be set up in the Set Defuel Levels menu within the Main Menu.

DEFUELING FEATURES	DODGE '07.5-'08
Pyro 1	X
Pyro 2	X
Engine Coolant Temperature	X
Boost Level PSI	X
Transmission Temperature	X
Oil Temperature	